

P R O V E N

Quality, Dependability and Reliability

AvtechTyee's 90-42303 Lightplate Connector provides isolated two circuit power to a mated lightplate. The connector has a floating feature to enhance and facilitate lightplate installation. Four different configurations of the 90-42303 series are offered for two panel sizes (.062" and .125") and two different terminations, either spade/snap on or ring tongue terminals.



PCB PIN LIGHTPLATE CONNECTOR

The 90-42303 connector also has a spring for low force ejection of the lightplate plug and mates with MS90335 lightplate plugs.

- Provides isolated two circuit power to mated lightplates
- Connector "floats" thereby facilitating mating of subassemblies
- Connector is spring loaded for low force ejection of the lightplate plug
- Mates with MS90335 lightplate plugs
- Options available for panel thicknesses of 0.062" and 0.125"
- Two different terminations are offered

Part Number	Panel Thickness	Termination Style
90-42303-1	0.062" thick	Ring Tongue Terminals
90-42303-2	0.125" thick	Ring Tongue Terminals
90-42303-3	0.062" thick	Spade Snap On
90-42303-4	0.125" thick	Spade Snap On

AvtechTyee Corporation

6500 Merrill Creek Parkway

Everett, Washington 98203

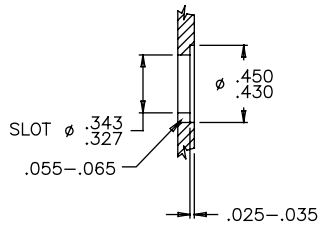
www.AvtechTyee.com

Tel: (425) 290-3100

Fax: (425) 513-6474



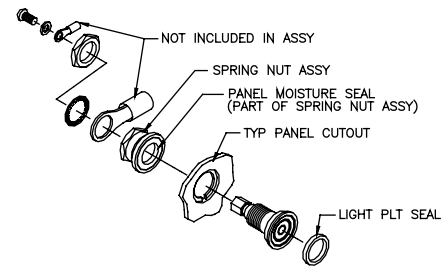
SUGGESTED PANEL CUT-OUT



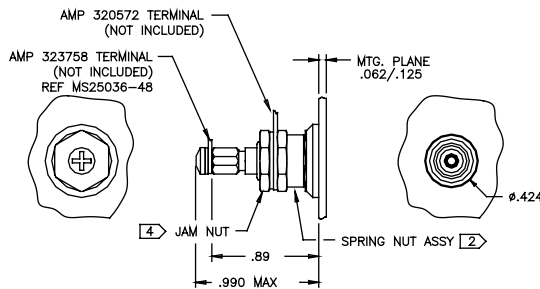
DETAIL 1
PANEL CUT-OUT SHOWN SECTIONED THRU (SLOT NOT REQUIRED FOR MOUNTING)

TYPICAL INSTALLATION

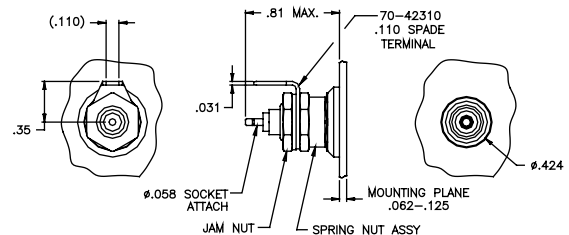
Terminal Style 1



TERMINATION STYLES



TERMINATION STYLE 1
RING TONGUE TERMINALS (-1 SHOWN REF. TABLE 1)



TERMINATION STYLE 2
SPADE/SNAP-ON (-3 SHOWN REF. TABLE 1)

CHARACTERISTICS

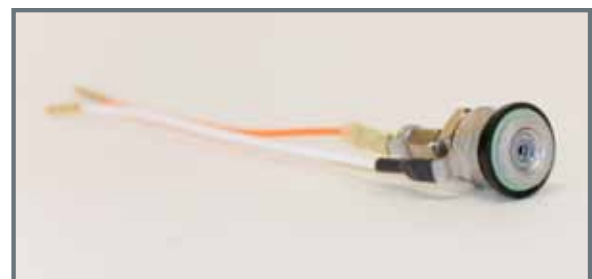
Characteristic	Description
Radial Float	.010 to .015 inches
Axial Grip on Mounting Plate	3 to 5 pounds force
Lightplate Mating Force	4 lbs. Max.
Lightplate Extraction Force	2 lbs. Max.

MATERIALS FINISHES

Material	Finish
Body	Brass per QQ-B-626 Plated QQ-N-290 (nickel)
Center Contact	Berylco 25 plated MIL-C-26074 (Nickel)
Spring Nut and Jam Nut	Brass per QQ-B-626 plated QQ-N-290 (Nickel)
Float/Insulator	Nylon

ELECTRICAL REQUIREMENTS

Requirement	Value	Units
Operating Voltage	5 or 28 5 or 115	Vdc VAC
Output Current	3 Amp 1 Amp	5 or 28 Vdc 120 VAC
Insulation Resistance	50	Mohms
Dielectric Withstanding Voltage (Between insulated circuits)	1200	Vac 60Hz for 1 minute
Dielectric Withstanding Voltage (Between circuits and panel)	1500	Vac 60Hz for 1 minute
Contact Resistance	50	milliohms max



Optional wire pigtails can be installed on the lightplate connector, contact Avtech for additional details